

主辦單位



行政院農業委員會林務局



國立臺灣大學生物資源
暨農學院實驗林管理處

國產材
臺灣館

木竹築夢

DREAM BUILDING with
TAIWAN WOOD & BAMBOO

中英文手冊 Chinese &
English Brochure

2021
國際
建材
展





目錄 Contents

木竹築夢02

Dream Building with Taiwan Wood & Bamboo

木 Wood

針葉樹種 Coniferous Tree Species04

闊葉樹種 Broadleaf Tree Species05

竹 Bamboo

孟宗竹、桂竹06

備料場 Preparation Factory

正昌製材08

昆晉實業 / 耕木工場09

明昇木業10

國立臺灣大學生物資源暨農學院實驗林管理處木材利用實習工廠11

木材商 Lumber Suppliers

中菱建材14

兆森 / 橡鹿手作15

宏昌木材行 / 電電街 (萊特科技照明)16

京典奇特17

昆儀實業 / 根源18

洲宇木業19

振茂木業20

森欣實業 / 蛋牌 The Egg21

滋林木業 OakCherry22

鄉村玫瑰室內裝修設計23

藝創木構24

竹材商 Bamboo Suppliers

互若亞 FLORA26

欣林竹藝社27

牛車輪竹品坊28

悅山工坊29

璞園藝術坊30

木竹創作廠商 Wood & Bamboo work Companies

1多點 idodan32

木城工坊 KIJO33

木酢達人34

有道禮設計35

竹籟文創36

森學苑37

德川音箱38

國產材加工技術39

Taiwan Wood & Bamboo, Processing Technology

國產材符合永續發展目SDGs精神40

Taiwan Wood & Bamboo, In Accordance with SDGs Principles

人工林永續經營與循環經濟42

Sustainable Management of Plantation Forests and The Circular Economy



木竹築夢

臺北國際建築建材暨產品展（以下稱建材展），是建築、建材業界最具指標性的年度盛會，因此，林務局今年第五度集結國內產官學研，共同參加建材展以推廣國產材，今年除了持續帶來優質國產木材業者及製品，更重點推廣有「綠金」美稱、用途廣泛的臺灣竹材。

林務局自2017年啟動「國產材元年」後，更加積極推廣國產木竹材，務求讓更多民眾及建築、設計業者了解及接觸國產材，擴大消費者需求，從而達到人工林產業振興及永續林業，提高國產木竹材自給率的目標。

今年第26屆聯合國氣候變遷大會（COP26）上，141國領袖共同簽署「格拉斯哥領袖森林與土地利用宣言（Glasgow Leaders' Declaration on Forest and Land Use）」，承諾將在2030年前終止森林濫伐與土地流失等問題，咸認「人類必須保護森林和其他陸地生態系統並加速其恢復」，承認森林的多重價值，以「促進資金流動與扭轉森林喪失和退化的國際目標保持一致，同時確保制定強有力的政策和系統，以加快向具有彈性和促進森林、可持續土地利用、生物多樣性和氣候目標的經濟轉型。」

我們正是基於這樣的理念推動國產材。進口木材除了運輸增加碳足跡，更不乏破壞天然林甚至熱帶雨林的疑慮，在保育天然林和有效經營利

用人工林的方針下，使用國產材可以保護森林免遭濫伐，也避免林地遭濫墾而土地退化；增加來自公私部門的資源挹注，以實現永續森林管理、森林保護和恢復，促使生產和消費合乎永續原則，達到減碳及維護生物多樣性的目的。

相較於鋼骨構造或鋼筋混凝土構造，無論是材料製成或整體建築，木竹構造建築都有較低的碳排放量及量體輕的優勢，透過現今改質、層積材等技術，也已克服木竹材過往易燃、易腐、脆折等缺點。選用有「林產品生產追溯條碼」的臺灣木材，更可避免誤用非法木材。此外，木竹材具有良好的隔熱、隔音、耐衝擊、氣味、美觀等效果，非常適合做為室內建築裝修材料。

為推動國產木竹材產業，林務局近年已協助廠商發展規格材、成立北中南東4處備料場，以因應提供統一規格且便於設計、利用的木構材料及供貨倉儲的建材市場需求。今年則更積極輔導廠商申請臺灣優良農產品（CAS）林產品的驗證，藉此讓國產材從原料、製程到產品的品質更加提升，符合國家標準，也更具國際競爭力，讓民眾更容易辨識、選擇優質國產林產品項。

使用國產木竹材是兼具環境永續及有益身心健康的消費行為，藉由永續消費的實踐，共享木竹所建構的優質空間，為地球預約生生不息的綠未來。

Dream Building with Taiwan Wood & Bamboo

Taipei Building Show is a major annual event in the building and materials industry. Hence, the Forestry Bureau gathered together domestic industry, government, academia, and research institutes for the fifth time this year to participate in the Taipei Building Show to promote domestic timber. Besides bringing together high quality domestic timber companies and products this year, the event will focus on promoting Taiwan's bamboo, which is known as "green gold" and can be used for many purposes.

After the Forestry Bureau set 2017 as the "first year of domestic timber", it has dedicated even greater effort to the promotion of domestic timber and bamboo, so that more citizens, construction companies, and design companies will understand and come in contact with domestic timber, expanding consumer demand to revitalize the artificial forest industry and achieve sustainable forestry. The Forestry Bureau hopes to thus increase the self-sufficiency ratio of domestic timber and bamboo.

During the UN Climate Change Conference this year (COP26), leaders of 141 countries jointly signed the Glasgow Leaders' Declaration on Forest and Land Use, and made a commitment to put an end to deforestation and land loss before 2030. They recognized that we must "conserve forests and other terrestrial ecosystems and accelerate their restoration," and recognized the multiple value of forests and the need to dedicate efforts to "facilitate the alignment of financial flows with international goals to reverse forest loss and degradation, while ensuring robust policies and systems are in place to accelerate the transition to an economy that is resilient and advances forest, sustainable land use, biodiversity and climate goals."

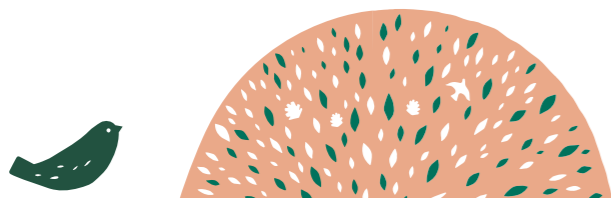
We are promoting domestic timber based on this concept. Imported lumber not only increases carbon footprint through transportation, but also raises concern about destroying forests and even tropical rainforests. Under the policy to conserve natural forests and effectively manage and utilize artificial forests, the use of domestic timber can protect natural forests from deforestation, and also prevent land degradation caused by deforestation. Our goal is to increase resources invested by the public and private sectors to achieve sustainable forest management and forest protection and recovery.

This way both production and consumption will comply with sustainability principles, which will achieve carbon reduction and the preservation of biodiversity.

Compared with steel structures or steel reinforced concrete structures, wooden and bamboo structures have the advantage of lower carbon emission and lighter weight, whether it may be from material preparation or overall construction. Modern modification and laminated material technologies have already overcome weaknesses of wood and bamboo in the past, such as flammable, perishable, and brittle. Selecting Taiwanese timber with the "forestry product traceability barcode" can avoid using illegal lumber by mistake. Furthermore, wood and bamboo have good heat insulation, sound insulation, shock resistance, smell, and aesthetic appearance, making them an extremely suitable material for interior decorations.

The Forestry Bureau has assisted companies in developing dimension lumber in recent years to promote the domestic timber and bamboo industry. It thus established 4 wood preparation yards in northern, central, southern, and eastern Taiwan for supply and storage, in order to meet the market demand on wooden materials with unified specifications for more convenient design and use. This year we began to dedicate even more effort to guiding companies in applying for certification of Taiwan's high quality agricultural products (CAS) and forestry products, improving the quality of domestic timber from raw materials, processes, to products, so that they not only meet national standards, but also gain international competitiveness. This way the products are more easily identifiable to citizens, so that they will choose high quality domestic timber products.

The use of domestic timber and bamboo is a consumption behavior that benefits both environmental sustainability and mental and physical health. The practice of sustainable consumption and sharing of high quality spaces created using lumber and bamboo will create a sustainable green future for our planet.



針葉樹種

Coniferous Tree Species

紅檜

俗稱：臺灣紅檜、松蘿、薄皮、水古杉、臺灣花柏

科屬：柏科扁柏屬

特徵：高度最高可達60公尺，直徑可達6公尺或更大，樹皮灰褐色至紅褐色，老樹常以縱條狀剝落。



杉木

俗稱：福州杉、廣葉杉

科屬：柏科杉木屬

特徵：樹幹通直，主幹明顯且生長迅速，10 – 20年即可成材。樹皮為紅褐色，具縱向淺溝裂，長條片狀剝落，內皮刀削後分泌白色樹脂。



柳杉

俗稱：吉野杉、日本杉、日本柳杉

科屬：柏科柳杉屬

特徵：最高可達70公尺，直徑可達4公尺，樹皮紅棕色，上具垂直條紋。葉基部向下延伸，微內曲，兩側均具白色氣孔帶。



戀大杉

俗稱：大點雨、香杉、烏杉

科屬：柏科杉木屬

特徵：樹高可達70公尺，直徑則可達2.5公尺寬，樹形多為寬塔形。樹幹通直，主幹明顯，樹皮呈紅褐色或灰紅棕色，具縱向交叉的淺溝裂，呈縱向長條片狀剝落；而枝幹則成小枝平展狀。葉螺旋狀著生，常以鐮刀狀來形容，此為杉木屬植物的特徵之一。



臺灣杉

俗稱：臺灣爺、禿杉、亞杉

科屬：柏科臺灣杉屬

特徵：臺灣杉為亞洲最高的樹種之一，樹高可達90公尺，直徑可達3公尺寬，樹形呈三角形，樹皮則為紅褐色，具龜甲狀深裂。



Chamaecyparis Formosensis

Scientific Name: *Chamaecyparis Formosensis*

Common Names: Taiwan Red Cypress (Benihi in Japanese), Vine-hanging Pine, Thin Skin, Spotted Cider, Taiwan Sawara Cypress

Family: *Cupressaceae* / Genus: *Cunninghamia*

Characteristics: The pointed scale-like opposite leaves grow on either sides of the small branches like shingles on the modern roof. It can often grow up to 60 m (197 ft) tall and 6 m (20 ft) trunk diameter. The mature grayish-brown to reddish-brown thin trunks develop vertical shallow grooves that peel off in long strips.

China Fir

Scientific Name: *Cunninghamia Lanceolata*

Common Names: Fuzhou Cedar, Wideleaf Cedar

Family: *Cupressaceae* / Genus: *Cunninghamia*

Characteristics: As a large evergreen, *Cunninghamia Lanceolata* is a prized timber as its trunk is straight and it grows fast. It can be harvested within 10-20 years and has been the most popular choice for main shafts in traditional architecture. The mature reddish-brown trunks develop vertical shallow grooves that peel off in long strips. White sap can be collected from the core when trunks are cut.

Japanese Cedar

Scientific Name: *Cryptomeria Japonica*

Common Names: Japanese Fir, Yoshino Fir, Japanese Cedar.

Family: *Cupressaceae* / Genus: *Cryptomeria*

Characteristics: *Cryptomeria Japonica* is a large evergreen tree, reaching up to 70 m (230 ft) tall and 4 m (13 ft) trunk diameter. Brownish red barks grow vertical patterns. The base of the leaves extended downward and curve inward slightly with 2 white stomatic (breathing holes) bands on either side.

Luanta Fir

Scientific Name: *Cunninghamia Konishii*

Common Names: Luanda Fir, Big Raindrops, Fragrant Fir, Dark Fir.

Family: *Cupressaceae* / Genus: *C. konishii*

Characteristics: *Cunninghamia Konishii* is a large evergreen tree, reaching up to 70 m (230 ft) tall and 2.5 m (8 ft) trunk diameter in an overall wide-based conical shape. The straight grayish red-brown trunks develop vertical shallow zigzag grooves that peel off in long strips. The small branches grow horizontally. The most prominent characteristic is the spiral leaves which are often described as in the shape of reaping hooks.

Taiwania

Scientific Name: *Taiwania Cryptomerioides*

Common Names: Taiwania, Taiwan Grandpa, Taiwan Cider, Asian Cider.

Family: *Cupressaceae* / Genus: *Taiwania*

Characteristics: *Taiwania Cryptomerioides* is one of the largest tree species in Asia, reported to the height of up to 90 m (300 ft) tall and with a trunk up to 3 m (10 ft) in diameter. Overall, the tree is in a triangle shape and the red-brown bark shows deep pentagonal or hexagonal patterns.

闊葉樹種

Broadleaf Tree Species

香樟

俗稱：芳樟、本樟、烏樟、樟仔

科屬：樟科樟屬

特徵：常綠大喬木。樹高多為30 – 60公尺，直徑可達3公尺寬，樹形高大壯碩，樹冠開展濃密。其樹枝、葉部與幹材均會散發特有的樟腦氣味。



大葉桃花心木

俗稱：桃花心木

科屬：楝科桃花心木屬

特徵：落葉大喬木，皮孔密布於樹幹上，樹皮呈片狀裂紋。葉互生，葉具長柄，為一回羽狀複葉，小葉斜卵形，先端漸尖，基部歪形。圓錐花序著生於葉腋上方。果為卵形或錐狀橢圓形。果實在1 – 3月間成熟開裂，種子為深褐色，具長翅。



臺灣檫

俗稱：雞油、檫、檫榆、光葉檫樹

科屬：榆科檫屬

特徵：落葉大喬木。樹高多為30 – 50公尺，直徑可達1.5公尺寬，樹形通直，樹皮為灰白色或褐灰色，表面呈現不規則之片狀剝落。



苦楝

俗稱：苦楝、苦苓

科屬：楝科楝屬

特徵：落葉大喬木，樹形呈傘形，高可達15 – 20公尺。樹皮為灰褐色或暗褐色，具明顯之縱裂，而幼枝被星狀柔毛且滿布皮孔。



相思樹

俗稱：相思仔

科屬：豆科相思樹屬

特徵：常綠中喬木。幼苗可見到二回羽狀複葉，退化後為具縱脈之假葉（Phyllodia）；假葉呈狹長披針形而略作鐮刀狀彎曲，革質。



Camphor Wood

Scientific Name: *Cinnamomum Camphora*

Common Names: Camphor Wood, Fragrance Camphor, Original Camphor, Dark Camphor

Family: *Cinnamomum* / Genus: *C. camphora*

Characteristics: Growing up to 30-60m (98-197ft) high with 3m (10ft) in diameter, *Cinnamomum Camphora* is a huge evergreen tree. In general, the tip of this tall tree is specially lush in lots of branches and leaves strong in special camphor fragrance.

Honduras Mahogany

Scientific Name: *Swietenia Macropnylla*

Common Names: Honduras Mahogany, Big-leaved Mahogany

Family: *Meliaceae* / Genus: *Swietenia*

Characteristics: This tall deciduous tree trunk is covered with stoma and the bark cracks up into rectangular pieces easily. The long-stemmed paripinnate leaves are long oblong with pointed ends and slanted bases with conical inflorescences blooming from the leaf axils. The fruits are egg-shaped or conical oblong in shape. The samaroid seeds turn brown and mature between January and March.

Taiwan Zelkova

Scientific Name: *Zelkova Serrata*

Common Names: Taiwan Zelkova, Chicken oil, Taiwan Zelkova, Zelkova Elm, Bright-leaved Zelkiva

Family: *Ulmaceae* / Genus: *Zelkova*

Characteristics: Growing up to 30-50m (98-64 ft) high with 1.5 m (5 ft) in diameter, *Zelkova Serrata* is a huge evergreen tree with straight trunks. In general, the dark gray to grayish white tree trunk is straight and peels off in irregular shape.

China Berry Tree

Scientific Name: *Melia Azedarach*

Common Names: China berry tree, bitter refining tree, bitter golden bells

Family: *Melia* / Genus: *M. azedarach*

Characteristics: This tall deciduous tree grows fast and the roots spread out widely and deeply under ground. The umbrella-shaped *Melia Azedarach* can grow up to 15-20m (50-66 ft) tall. The tree trunks are dark gray or dark brown with deep vertical grooves. The young branches are covered with stoma and star-shaped feather-like fibers.

Taiwan Acacia

Scientific Name: *Acacia Confusa*

Common Names: Taiwan Acacia, love-sick tree

Family: *Acacia* / Genus: *A. confusa*

Characteristics: Classified under the Fabaceae or Leguminosae family, it is a mid-sized evergreen tree. The young trees have alternate bipinnate compound coriaceous leaves while the mature trees regressed into phyllodia in a shape of elongated slighted curved saber covered with thin needles.

竹

Bamboo

竹桿為竹子的地上莖，也是竹子最有價值的部位，當生長到3-4年時，其材質最為堅實。其中，桂竹桿的用途廣泛，竹桿基部常做為竹劍的材料，其餘的部位則可做為竹籤、竹編及農業資材的。孟宗竹竹頭則常見用來雕刻對聯，更是膠合的好材料，用它做成的集成材，可製成竹茶盤、竹地板、竹盒、竹筷...等。選竹材需於秋季至農曆年前，此時竹桿材料澱粉含量低，較不會受到蟲蛀。較粗的孟宗竹、麻竹、刺竹，可以成為竹屋、竹樓的樑柱、梯子，較細的桂竹、長枝竹則做為竹屋的壁板、竹門、竹窗、窗板等材料。

孟宗竹

禾本科孟宗竹屬
原產於中國南方，又稱毛竹



生長型態：地下莖橫走，單桿散生，主要生長於鹿谷、竹山地區，最適海拔高度為500-1800公尺的溫暖帶氣候區。

尺寸：高度：10-18公尺 直徑：8-18公分
節間長：20-30公分 稈肉厚：0.8-1.5公分

特徵：每一節基部都有一白色環，每節有兩小分枝，幼竹表面綠色且有銀白色絨毛，成熟時逐漸變為黃褐色，並漸變平滑無毛。會分泌植物鹼、類黃素抑制其他植物生長。

用途：孟宗竹莖價值高，被廣泛運用於建築、鷹架、廣告看板支架、雕刻、家具、竹炭、農具等，也可作為集成材。

桂竹

禾本科毛竹屬
又稱為臺灣桂竹，是特有種



生長型態：地下莖橫走，單桿散生，主要生長在臺灣北、中部海拔150-1500公尺的山區。

尺寸：高度：6-12公尺 直徑：2-10公分
節間長：12-40公分 稈肉厚：0.4-1公分

特徵：表皮堅硬有光澤、稈肉不厚、抗彎強度大、劈剝容易、狹長有褐色斑點，葉由2-3片聚生，前端尖銳葉背有毛，自3月下旬至5月末生筍。

用途：農業時代常用來製作農、漁及生活用具，如搖籃、竹門扇、椅轎、米籬、菜籃等。今用於建築、竹劍、包管家具、編織藝品、竹蓆、竹簾、竹炭等用途極廣。

Bamboo pole is the terrestrial stem of bamboo and also the most valuable part of bamboo. The material is the hardest after growing for 3-4 years. Makino bamboo poles have extensive uses. The base of the bamboo pole is often used to make bamboo swords, and remaining parts can be used to make bamboo sticks, bamboo weaving, and agricultural materials. The head of moso bamboo is often used to carve couplets, and is excellent material for making laminated bamboo, which can be made into bamboo tea trays, bamboo flooring, bamboo boxes, bamboo chopsticks, etc. Bamboo must be selected in the fall to before Chinese New Year, which is when bamboo poles have low starch content, so they will not be eaten by worms. Relatively thick moso bamboo, ma bamboo, and thorny bamboo can be made into the beams, columns, and ladders in bamboo houses and bamboo buildings. Relatively thin makino bamboo and long-shoot bamboo can be made into the bamboo walls, doors, windows, and window boards of bamboo houses.

Moso bamboo

The genus *Phyllostachys* of the Poaceae family
Originally produced in Southern China

Growth form: Subterranean stem of the rhizome type, single pole, grows scattered mainly in Lugu and Zhushan, most suitable for temperate climate at altitudes of 500-1,800 m.

Dimensions: Height: 10-18 m Diameter: 8-18 cm
Internode length: 20-30 cm Stalk meat thickness: 0.8-1.5 cm

Features: The base of each internode has a white ring, each node has two small branches, the surface of bamboo shoots is green with silver white fluff, which gradually turns yellow brown as the bamboo matures, and further becomes smooth without any fluff. Secretes plant alkaloids and flavonoids that inhibits the growth of other plants.

Usage: The stem of moso bamboo has high value and is extensively used in buildings, scaffolds, signboard frames, carvings, furniture, bamboo charcoal, and agricultural tools. It can also be made into laminated bamboo.

Makino bamboo

The genus *Phyllostachys* of the Poaceae family
An endemic species

Growth form: Subterranean stem of the rhizome type, single pole, grows scattered mainly in the mountain areas of Northern and Central Taiwan at altitudes of 150-1,500 m.

Dimensions: Height: 6-12 m Diameter: 2-10 cm
Internode length: 12-40 cm Stalk meat thickness: 0.4-1 cm

Features: Hard and glossy skin, stalk meat is not thick, high flexural strength, easy to peel, long with brown spots. 2-3 leaves grow together, the front is sharp and underside pubescent, bamboo shoots grow from late March to the end of May.

Usage: Often used to make tools for agriculture, fisheries, and daily life during the age of agriculture, such as cradles, bamboo doors, chairs, and baskets. Now extensively used in buildings, bamboo swords, furniture, weaving artworks, bamboo mats, bamboo curtains, and bamboo charcoal.

備料場

Preparation Factory





正昌製材有限公司
JANG CHANG LIANG CO.,LTD.

正昌製材

1973年建廠的「正昌製材」，主要從事造林、製材業；由臺灣生產之柳杉、杉木（福杉）及臺灣杉作為製材材料，繼而加工成各式製品。近年來陸續引進雷射線參考基準等先進設備，讓原木經過「大剖」、「小剖」等流程切割不同成材後，剩餘木料再送至加工生產處製成板模，其餘無法使用木片、木屑或下腳料，亦可做為蒸汽鍋爐的燃料。

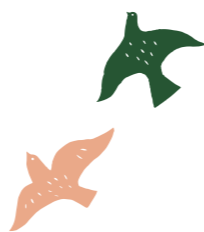
「正昌製材」為臺灣北部的木材備料場，目前使用國產材比率已達90%，今年起更積極朝CAS（臺灣優良農產品標章—木製材品）驗證邁進，讓設計師、建築師能選購到臺灣優質建材。此次展區上也將展出「正昌製材」申請CAS標章驗證中的柳杉規格品，歡迎到場參觀。



JANG CHANG LIANG CO., LTD. was established in 1973 and mainly engages in forestation and timber production. The company uses *Cryptomeria japonica*, *Cunninghamia lanceolata*, and *Taiwania cryptomerioides* produced in Taiwan to process into a variety of products. In recent years, the company began using advanced equipment, such as laser reference lines, so that after logs are cut into different sizes, the remaining wood is made into formwork, and wood chips and scraps that cannot be used for other purposes are used as fuel for the steam boiler.

JANG CHANG LIANG CO., LTD. is a timber preparation factory in Northern Taiwan, and currently uses up to 90% domestic timber for its materials. This year, the company began dedicating its efforts to obtain Certified Agricultural Standards (CAS) licensing in the category of wooden materials, so that designers and architects can have the choice of high quality building materials produced in Taiwan. In this exhibition, visitors can also see its wooden boards made from *Taiwania cryptomerioides* and *Cunninghamia lanceolata* which are in the application process for CAS certification.

地址：新竹縣橫山鄉橫山街一段152號
電話：03-593 3904



昆晉實業股份有限公司
KUEN JIN WOOD INDUSTRY CORP.

昆晉實業 / 耕木工場

「昆晉實業」創立於1986年，主要從事原木材料買賣、戶外木結構工程、景觀工程、攔砂壩OD生態工法等設計及施作，並提供戶外景觀用材、戶外木結構工程、室內建材等材料製材、加工、乾燥、防腐等項目。

於2011年10月榮獲經濟部工業局發給臺灣製木竹製品MIT微笑標章認證合格廠商證書，為公司的產品品質認證加分。「昆晉實業」為臺灣東部的木材備料場，2021年即朝CAS（臺灣優良農產品標章—木製材品）驗證邁進，將國產柳杉、臺灣杉板材及柳杉防腐材提出CAS驗證申請，以建立品牌形象為目標。並且成立木材工藝部門，利用產品剩餘資源以避免浪費，在「大材不小用，小材不扔掉」的用木觀念下，將木材做有效充分利用，產品朝工藝化、精緻化、生活化、多元化目標。

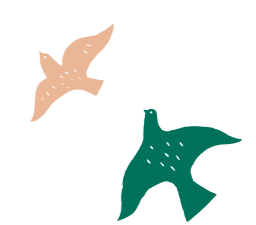
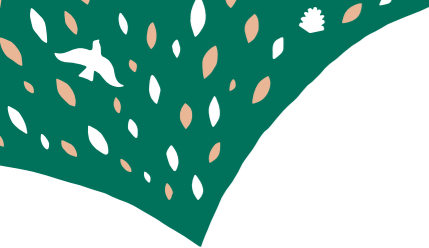


KUEN JIN WOOD INDUSTRY CORPORATION was established in 1986 and mainly engages in the sale of logs, the design and construction of outdoor structures, landscapes, and OD ecological construction on check dams, and also provides preparation, processing, drying, and preservative treatment of materials for outdoor landscapes, outdoor wooden structures, and indoor building materials.

The company obtained the Taiwan-made Wooden Product MIT Smile Logo from the Industrial Development Bureau, Ministry of Economic Affairs in October 2011, earning extra points for the company's product quality. KUEN JIN WOOD INDUSTRY CORPORATION is a wood preparation factory in Eastern Taiwan, and began dedicating its efforts to obtaining the CAS – Wooden Materials certification in 2021, applying for CAS certification for domestic *Cryptomeria japonica*, *Taiwania cryptomerioides*, and *Cryptomeria japonica* that went through preservative treatment, in order to build its brand image. The company established a woodcraft department and utilizes remaining resources to avoid waste. It fully utilizes lumber based on the concept of "not using large materials for small purposes, and not throwing away small materials," developing a wide variety of exquisite products for daily use.

地址：宜蘭縣蘇澳鎮自強路8號
電話：03-990 2485





明昇木業

「明昇木業」成立於1981年間，主要從事伐木、木材批發、建材零售，從巨大原木裁割到小木塊不同尺寸，皆可為客戶需求量身訂做，從木材種類、尺寸、數量，提供一條龍的服務，提供範疇涵蓋古蹟建築、寺廟及居家建材，原木種類提供臺灣紅檜、扁柏、福杉、柳杉、肖楠及樟木等。

由父執輩所經營中間盤商轉型為三兄弟分工的製材工廠，見證嘉義林業興盛，創造臺灣檜木的木金歲月。使用木質紋理漂亮紅檜，製造阿里山檜木車廂，精準尺寸及龐大數量木料協助完成嘉義檜意生活村、臺南八田與一紀念園區、臺北鐵道部等歷史古蹟建築等，也為臺南白河大仙寺三寶殿提供了梁柱木料，將大自然珍貴的檜木價值發揮淋漓盡致。「明昇木業」現在已是臺灣南部重要的木材備料場，也將產品申請CAS驗證中。

MIN-SHENG TIMBER BUSINESS CO. was established in 1981 and mainly engages in lumbering, lumber wholesale, and building material retail. The company can cut massive logs down into wooden blocks with different dimensions, and provides integrated services that customize lumber types, dimensions, and quantity to meet customers' needs. Its building materials can be provided for historical buildings, temples, and average houses. The types of wood available include Taiwan red cypress, Taiwan cypress, Cunninghamia lanceolata, Cryptomeria japonica, Taiwan incense cedar, and camphor.

The company transformed from an intermediate trader operated by the older generation to a lumber factory jointly operated by three brothers, and witnessed the rise of forestry in Chiayi, creating the golden age for Taiwan cypress. The company used red cypress with beautiful wood grains to make the Alishan cypress train cars; provided a large amount of lumber with accurate dimensions to help complete the historical buildings Hinoki Village in Chiayi, Hatta Yoichi Memorial Park, and Railway Department Park; provided lumber for beams and columns in Baihe Daxian Temple Sanbao Hall, fully utilizing the value of nature's treasure – cypress. MIN-SHENG TIMBER BUSINESS CO. has become an important timber preparation factory in Southern Taiwan and applies the CAS certificate now.

地址：嘉義市西區世賢路一段580巷310號
電話：05-232 6186



國立臺灣大學生物資源暨農學院實驗林管理處木材利用實習工廠

臺灣大學為增進木材利用並配合生物資源暨農學院森林環境暨資源學系師生從事教學、實習、試驗研究及推廣提供良好設備與場所，1960年於南投縣水里鄉永豐村設置「製材工廠」，1963年增設木器家具製作工廠，更名為「木材利用實習工廠」，2013年設立「木材利用教學推廣中心」，配合學生校外實習場所之課程的各項協助，並提供製材、防腐、家具木工、CNC加工、雷射雕刻、木構建築等技術支援與住宿服務。

臺大實驗林木材利用實習工廠為臺灣中部的木材備料場，其3種國產針葉樹裝修壁板系列產品亦通過健康綠建材及生態綠建材認證，今年更將柳杉、臺灣杉、杉木等3種國產規格材，申請CAS標章驗證中（臺灣優良農產品標章—木製材品）。



National Taiwan University (NTU) established a lumber factory in Yongfeng Village, Shuili Township, Nantou County in 1960 to better utilize wood and provide good equipment and site for teachers and students of the School of Forestry and Resources Conservation, College of Bioresources and Agricultural to engage in teaching, internship, experiment, research, and promotion. NTU added a wooden furniture factory in 1963 and renamed the factory "Wood Manufacturing Intern Factory." NTU established the "Wood Utilization Teaching and Promotion Center" in 2013, providing assistance with courses at internship locations off campus. The center also provides technical support for material production, preservative treatment, furniture woodworking, CNC processing, laser carving, and wooden structures, as well as dormitory services.

The Wood Manufacturing Intern Factory of NTU Experimental Forest is a timber preparation factory in Central Taiwan, its series of wall panel products made from 3 domestic coniferous wood species passed healthy green building material and ecological green building material certifications. This year, it further applied for CAS verification (wooden materials certification) for domestic Cryptomeria japonica, Cunninghamia lanceolata, and Taiwan cryptomerioides dimension lumber.

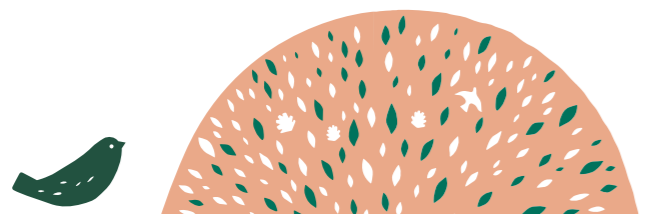
地址：南投縣水里鄉水信路一段547號
電話：049-277 0138



Lined writing area for notes.

木材商

Lumber Suppliers





中菱建材

中菱自1964年起與歐洲同步在臺灣在地發展木絲水泥板，我們珍視木頭資源，故以「礦化」的關鍵技術，來增加木材安定性及延長使用年限。

同時也不斷溯源，重新檢視臺灣的林業資源，為讓臺灣國產木材跟疏伐木有效加值與應用，提升木材資源生產力，除努力探索在地小徑材的各種潛能外，從木料來源管理，運送及分銷等流程，確保木材皆是來自合法來源，無混入非法砍伐或不明來源之木頭，讓在地森林得以健全發展，協助提升國產材自給率，以成為邁向友善人們與山林的綠色生產事業。



Chunlyn WWCB Tech Co., Ltd. began developing wood wool cement boards (WWCB) in Taiwan in 1964, the same time as Europe. We cherish lumber resources and thus used the key technology of "mineralization" to increase the stability of wood and extend its service life.

We also traced the source and reexamined Taiwan's forestry resources. In order to effectively add value to and apply domestic timber and logs from thinning, we explored the potential of local small diameter logs, and ensured that all lumber is from lawful sources and no lumber is from illegal logging or unknown sources via the lumber source management, transportation, and distribution process. This allows local forests to achieve healthy development and increases the self-sufficiency ratio of domestic timber, so as to become a green production company that is friendly to people, mountains, and forests.

地址：臺北市大安區敦化南路二段100號3樓
電話：02-2702 1516



兆森 / 橡鹿手作

來自屏東的「兆森有限公司」，追求「自然·無垢·無毒·健康」四大目標，以本土的木材、源自內心的工藝，加上懷抱熱情、理想與堅持，致力創造家與生活幸福無毒環境，攜手實現在品牌「橡鹿手作」裡！

營業項目包含中、大型環境空間景觀設計及工程營造；景觀綠美化設計及木作工程施作；木竹材加工、生態景觀設計，建物翻修、原木裝潢；客製化無垢木家具及古董家具整修、保養等等。

2017年創立公司時即積極投入平地造林之國產材採伐收購，近年來更參與多項國產木竹林採伐與初級加工設備開發研究，且致力推廣國產木竹材應用，如高雄市美濃區農會超市採用QR code認證國產柳杉實木製作斗笠弧線造型天花裝修、屏東縣潮州鎮社福園區戶外共融式公園採用QR code認證柳杉實木製作大型遊具並取得符合遊具CNS12642規範安全認證、嘉義市構竹林鐵展覽「精靈之境·竹構芒果茶屋」協助設計師運用烘烤、編織、綁紮等多項竹材加工技術建構出多曲度弧形竹結構。

配合推廣竹材產業發展，於2020年投入人力於工廠周邊種植1公頃竹林實地進行叢生竹林經營管理與加工之研究、期許2024年後可以穩定推出更多木竹構材。

本次參展將展出各式文創商品、板材與家具，用行動支持在地好材料，創造森林的永續循環，讓喜愛橡鹿的朋友們享受家與生活之幸福無毒環境。



Located in Pingtung, Zhaosen Co., Ltd. pursues "natural, solid, toxic-free, health." With domestic timber and art that originates from the heart, the company combines passion, ideals, and persistence, striving to create a toxic-free environment for home and a happy life, which is realized through the brand "Woodeer".

Its business items include landscape design and construction for medium to large spaces; landscape greening design and woodworking; lumber processing, ecological landscape design, building renovation, and log decoration; customized solid wood furniture and antique furniture renovation and maintenance.

The company began lumbering and purchasing domestic timber from plain forestation when it was established in 2017. In recent years, it has participated in even more studies on lumbering domestic timber and bamboo and the development of primary processing equipment. It also dedicated in the application of domestic timber and bamboo, such as the bamboo hat ceiling design made from solid wood of domestic Cryptomeria japonica certified with QR code in Kaohsiung City Meinong District Farmers' Association; the large playground equipment made of solid wood of domestic Cryptomeria japonica certified with QR code in an outdoor inclusive park - Chaozhou Social Welfare Park in Pingtung County, which obtained the CNS12642 safety certification for playground equipment. It also assisted the designer of "Realm of Fairies - Bamboo Structured Mango Tea House" in Chiayi City's bamboo structure exhibition, using a variety of bamboo processing and crafting techniques, such as baking, weaving, and binding, to build differently curved bamboo structures.

The company planted one hectare of bamboo forest around the factory in 2020 to promote the development of the bamboo industry, and conducted studies on bamboo forest management and bamboo processing, in hope to stably provide more materials for wooden and bamboo structures after 2024.

The company will display a variety of creative products, planks, and furniture during the exhibition. To support good local materials, while creating a sustainable cycle of forests, Woodeer hopes to make everyone enjoy a happy and toxic-free environment at home and in their life.

地址：屏東市古松西巷679號(公司)
屏東縣高樹鄉高美路300號(工廠)
電話：08-732 7055



宏昌木材行 / 電電街(萊特科技)

「宏昌木材行」工廠座落於南投縣鹿谷鄉，至今已傳承三代，初名為裕民鋸木廠，1972年改名為宏昌木材行，當時以針一級原木製材板模產品為主，曾參與臺中五期大樓、成功嶺營房、臺中美術館、清泉崗、漢翔等大型建築板模供材。1991年續投入木屋建材市場，嚴選廣進各式原木建材。近年將觸角做多元化經營，生產各種建材供應家具業、裝潢業與建築業，並善用各類國產材，藝創出實木手工傢俱，聚寶盆、神佛像、動物像等等木製藝品。

本次參展重點與電電街（萊特科技照明）跨界合作，生產研發以「臺灣杉木」為主題的高級木質燈飾，藉由最新LED雙色溫手機無線遙控技術，搭配木質燈飾藝術與臺灣杉的溫暖芳芳香氣，跳脫以往科技照明冰冷感，將國產材發揮最大藝創價值。



The factory of Hung Chang Wood Company is located in Lugu Township, Nantou County and has already been passed down three generations. The company was originally named Yumin Saw Mill and was renamed Hung Chang Wood Company in 1972. At the time, the company mainly produced products for formwork using first class wood. The company has supplied materials for the formwork of numerous large buildings, including buildings in Taichung's 5th redevelopment zone, buildings in Chenggong Hill, National Taiwan Museum of Fine Arts, Qingquangang, and Aerospace Industrial Development Corporation. The company entered the wooden house building material market in 1991, and extensively imported a wide variety of strictly selected logs. The company began to diversify in recent years, and produced a variety of materials for the furniture industry, interior decoration industry, and building industry. It utilizes a variety of domestic timber to create handmade wooden furniture and wooden artworks, such as treasure bowls, Buddha statues, and animal carvings.

The company collaborated with eee-street (Lightalk Lighting) for this exhibition, and produced high-end wooden lighting decorations featuring "Taiwanicryptomerioides". Using the latest LED dual color remote control technology with mobile phones, and the warmth and scent of Taiwanicryptomerioides in the wooden lighting decorations, the company has eliminated the image of technology and lighting being cold and maximized the art value of domestic timber.

地址：桃園市桃園區守法路名人巷7號8樓
電話：03-334 7832 / 0922-230 906



京典奇特

「京典奇特」創立於2001年，目前在印尼、宜蘭、冬山、內湖、文昌、五結、礁溪等地皆有工廠 / 據點，早期以進口印尼柚木為主，專司製造、生產、設計各式傢俱，2019年大舉跨入國產材領域，隔年協同林務局推廣「林產品追溯系統」，藉由QR code形式使民眾了解如何購買這些合法臺灣瑰寶，保護珍貴天然林免於遭盜伐。

京典奇特的經營理念「不將就」，因為「不將就」所以對產品品質的追求一直不曾停止，多年來持續朝這條路上努力，並將這樣理念延續到國產材，推動國產材精品化。此次參展重點推廣國產實木，將展出保留天然風化紋路臺灣紅檜藝品，及巧妙融入原木裂痕，CNC折角完全對花的臺灣扁柏折角餐桌等，讓民眾眼見為憑體驗臺灣原木藝術之美。



JD2017 CO., LTD. was founded in 2001 and currently has factories/locations in Indonesia, Yilan, Dongshan, Neihu, Wenchang, Wujie, and Jiaoxi. It mainly imported Indonesian teak during its early years, and specialized in the manufacturing, production, and design of various furniture. The company expanded into the field of domestic timber in 2019, and jointly promoted the "forestry product traceability system" together with the Forestry Bureau the following year. The system uses QR code to let people understand how to legally purchase these treasures of Taiwan, and to protect Taiwan's precious natural forests from illegal logging.

The company's business philosophy is "don't settle," and it has never ceased to pursue product quality because it doesn't settle. It has continued to dedicate its efforts down this path over the years, and extended the philosophy to domestic timber, promoting the exquisiteness of domestic timber. The company's main reason for participating in the exhibition is to promote domestic timber, and it will display artworks made from Taiwan red cypress that have preserved the natural grains from weathering, as well as dining tables made from Taiwan cypress that have cleverly incorporated cracks in the original wood and went through CNC corner crimping with completely aligned patterns, allowing people to experience the beauty of Taiwan's woodworking art with their own eyes.

地址：宜蘭縣礁溪鄉踏踏五路168號
電話：03-988 7789





昆儀實業 / 根源

「昆儀實業」為主營木材保存技術之專業加工廠，其中包括木材化學防腐、耐燃處理及無毒環保的熱改質技術（thermo-modification）。透過木材熱改質技術專利，來提高木材尺寸安定性、耐腐性外，更提高紋理美觀，強化木料再造性及創作性，提高臺灣國產材之經濟價值。

「近年來致力於重新鏈接國產材產業鏈，並以活化臺灣林木產業為公司願景！」成立根源品牌，專營國產材原料及加工品，目標使林木資源能夠穩定供應市場。另利用國產木材原料、加工品、特產物、下腳料、藝術品等不同成品與半成品，創造國產材新樣貌！希望取之森林資源，讓森林保持健康成長並和生活產生串聯。今年會場上將展出國產材板材如臺灣杉等；國產材建材如柳杉規格材、熱改質相思木地板等，及生活化用品如熱改質相思木、熱改質棟木、桃花心木製成之茶盤等藝品。

KUNN YIH WOOD CORPORATION is a processing plant that specializes in wood preservation technology, including chemical preservative treatment, fire-retardant treatment, and toxic-free eco-friendly thermo-modification technology. The company improves the dimensional stability and corrosion resistance of wood through its patented thermo-modification technology, and further improves the aesthetics of wood grains, while enhancing the reproducibility and creativity of wooden materials, which increases the economic value of Taiwan's domestic timber.

"The company has dedicated its efforts to reconnecting the industrial chain for domestic timber with the vision of revitalizing Taiwan's lumber industry!" The company established the brand Genyuan to focus on domestic lumber and processed products, aim to provide a stable supply of lumber resources for the market. The company also uses finished products and semi-finished products, such as domestic timber raw materials, processed products, special forest products, scraps, and artworks, to create a new look for domestic timber! The company hopes that resources taken from the forest can allow the forest to maintain healthy growth and form a connection with daily life. During the exhibition this year, the company will display planks made from domestic timber, such as *Taiwaniacryptomerioides*, construction materials, such as dimension cedar lumber and thermally modified acacia planks, and goods used in daily life, such as tea trays made from thermally modified acacia, thermally modified *Taiwaniacryptomerioides*, and mahogany.



地址：宜蘭縣蘇澳鎮自強路6號
電話：03-990 3188

洲宇木業

位於桃園區傳統木作產業要地，也在傳統與創新的世代交替中轉型。

設計面向一直不斷創新，材料使用上也大膽嘗試，加入了許多國產材使用，希望能透過新的設計思維，跟客戶充分的討論與溝通，創造出最新穎的國產材居家空間；唯有真實的讓國產材進到生活空間，才能真實的讓大眾了解，並且喜愛國產材。

桃園區域有豐富的林業資源，能妥善適當的利用不但讓產業復甦，也讓自然環境活絡起來，對於整體自然環境相信也是一大益處。

洲宇努力於開發、訂製傢俱傢飾品；居家任一空間都有跨足，希望能更了解客戶需求，創造更實用且有趣的居家生活空間。



The company is at a key location of the traditional woodworking industry in Taoyuan, and went through transformation in the alternation of generations from traditional to innovation.

The company continues to create innovative designs and makes bold attempts in the use of materials, adding many domestic materials. The company aims to create new home spaces with domestic timber based on new design concepts after thorough discussion and communication with customers. Bringing domestic timber into living spaces is the only way to let the public truly understand and become fond of domestic timber.

Taoyuan has an abundance of forestry resources, which will not only revive the industry if properly utilized, but also revitalize the natural environment, which will also greatly benefit the overall natural environment.

Zuwood has dedicated its efforts to the development of customized furniture and decorations. It is involved in all spaces in homes and hopes to better understand customer needs to create more practical and interesting living spaces at home.

地址：桃園市龍潭區成功路319巷83-1號
電話：03-489 1706





振茂木業

來自嘉義的「振茂木業」，前身為長茂鋸木工廠，成立於1967年，初以臺灣一、二級木、柚木、楠木、樟木、烏心石等雜類供應家具木料為主。1998年創立振茂木業有限公司，以卓越經驗與製材技術，迎合各種訂製木料製品供客戶需求，舉凡臺灣材、北美材、非洲材、南洋材等木料客製化訂製與加工，且均可接受大量、設計工程與零售DIY訂購。

振茂木業的永續經營理念，適「材」適用，絕不浪費珍貴木材資源。公司專業團隊堅守振茂永續精神與信念，持續尋找外觀美，自然持久、耐用耐腐、抗

蟲性佳、穩定性高且易於加工油漆上色的好材料，為珍貴的森林資源盡一份心。此次亦將展出柳杉原木、柳杉寬板、柳杉圓桌等製品。



CHEN MAO WOOD CO., LTD. is a company from Chiayi. It was formerly Changmao sawing factory established in 1967, and initially supplied Taiwan's first class and second class wood, teak, phoebe, camphor, and Formosan Michelia for making furniture. CHEN MAO WOOD CO., LTD. was established in 1998 and utilizes its experience and woodworking technologies to meet customer demand on customized wood products. It is able to accept large orders for customized products and processing of Taiwanese timber, North American timber, African timber, and South Sea timber, as well as design, engineering, retail, and DIY purchase orders.

The sustainability philosophy of CHEN MAO WOOD CO., LTD. is to find the right use for the right timber and never waste precious timber resources. The company's professional team firmly upholds the spirit and philosophy of sustainability as it continues to search for materials with an aesthetic appearance, naturally durable, corrosion resistant, pest resistant, highly stable, and easy to process and paint, thereby contributing to precious forest resources. The company will display cedar logs, cedar planks, and cedar round tables.

地址：嘉義市西區文化路716號
電話：05-232 2085



森欣實業 / 蛋牌 The Egg

「蛋牌The Egg」秉持著臺灣價值和永續發展的信念，以「取自臺灣，用於臺灣」的中心思想，堅持使用國產材，如何拓展材料的利用性，更是蛋牌一直努力課題。

相思木對於蛋牌創辦人來說，是個能讓臺灣林業蓬勃發展的重要角色。懷著尊重的心砍下樹木後，為了達到百分之百的木材利用率，持續發展出一系列的林業產品。從以CNC工法及全榫接工藝生產之精品家具、木吉他及電吉他，到相思木精釀啤酒，今年更積極跨足「運動休閒領域」，開發出國產相思木桌球拍、球棒、木滑板及運動帽等系列產品。廣泛的運用拉近了國產材與國人之間的距離，進而登上國際舞臺。



The Egg upholds Taiwan's values and the concept of sustainable development, with the core philosophy of "using what is taken from Taiwan for Taiwan." The company insists on using domestic timber, and continues to dedicate its efforts to expanding the usability of materials.

The founder of The Egg believes that Taiwan Acacia will play an important role in the flourishing development of Taiwan's forestry. With respect toward life, the egg developed a series of forestry products to achieve 100% utilization of wood after a tree is cut down. From high quality furniture, acoustic guitars and electric guitars made with CNC techniques and mortise and tenon to Taiwan acacia craft beer, the company further expanded into the field of sports and leisure this year, developing table tennis rackets, baseball bats, wooden skateboards, and baseball caps using Taiwan acacia. The extensive applications bring domestic timber closer to citizens and further onto the international stage.

地址：新竹縣新豐鄉新豐村284號
電話：03-568 9858



滋林 OakCherry

創立於1994年的「滋林木業」，專精生產「木皮不織布」，將木材刨切進行薄片化，保留完整木紋與質地，經過加工製作，進而使用於室內裝潢、家具貼皮之特別技術。如此生產木皮不織布，適用二度底漆工法，將原使用於遊艇內裝施工法活用，製作100%良品率產品，施工容易，耐髒汙，為現行塗裝木皮板與素面木皮板施工困難提出解決之道。

「OakCherry」為滋林木業旗下新創品牌，老字號跨入文創新領域，從裝潢用木皮板、木皮不織布延伸至鑲花工藝Marquetry木製居家小物，藉由天然木皮獨一無二溫潤美麗，喚起內心手作靈魂，同時還積極推廣國產材臺灣木皮應用，開發出臺灣材海島型木地板、複合材壁板等，將特色木紋風貌妝點居家生活。

OakCherry was founded in 1994 and specializes in the production of "wood veneer non-woven fabric", which uses a special technique to thinly cut wood while retaining the wood grains and texture, and then processing the wood veneer for interior decoration and pasting on furniture. The wood veneer non-woven fabric is applicable to the surfacer construction method, which utilizes the construction method originally used for interior decorations of yachts, and produces products with 100% yield. The product is easy-to-use in construction and dirt resistant, providing a solution for the difficult construction when using painted veneer boards and plain veneer boards.

OakCherry is a new brand of General Veneer Laminated. Corp., an established company expanding into the cultural creative industry. From veneer boards used for interior decorations, wood veneer non-woven fabric, to Marquetry wooden products, the uniquely warm beauty of natural wood veneer awakens the craving for handmade goods. The company is also actively promoting applications of wood veneer made from domestic timber, and has developed engineered hardwood flooring and composite material wall panels made from domestic timber, using wood grains to decorate stay-at-home life.

地址：屏東縣新園鄉興龍村臥龍路504-4號
電話：0913-569 679



鄉村玫瑰室內裝修設計

家～永遠是最溫暖的避風港

開始接觸木製家具，是因為想給小孩最天然無毒的居家環境，加上愛木頭的天性，就這樣一頭栽入木頭的世界裡。

這些年鄉村玫瑰室內裝修設計不斷地在木藝上精益求精，鄉村風實木家具、文創商品、國產材獎座、商業空間規畫、室內裝修設計，就是希望讓更多人感受自然實木傳達的幸福感。

Home will always be the warmest sheltering harbor

Country Rose Interior Decoration and Design began making wooden furniture to give children a natural toxic-free home environment, and fully dedicated ourselves to this world due to our love for wood.

Over the years, Country Rose Interior Decoration and Design continued to improve our woodworking skills, country-style wooden furniture, cultural creative products, awards for domestic timber, commercial space planning, and interior decoration and design, in hopes of letting even more people experience the happiness from seeing wooden logs.



地址：高雄市大寮區三隆路583-23號
電話：0920-245 576



藝創

藝創木構

來自桃園平鎮的「藝創木構」，秉持著用木材工藝來創造更高層次的生活價值理念，並堅持「敬天愛物、環保無毒、自然體感、獨特細膩」四大設計理念，以全木質生活為目標，從木結構設計施工、木質室裝、生活家具到木製產品，堅持品質與採用實木材質，以國產木材為主，減少碳足跡外，更冀望能為臺灣林業盡棉薄之力。

為支持永續林業發展，由年輕人創業投入成立的「藝創木構」，選用本地製造的環保無毒塗料為產品提供保護。製作工法上，善用傳統的「榫卯接合」使結構更堅固，針對各種木質材料樣貌特性，讓產品增添韻味與創新「藝創」感。本次會場上將展出以臺灣柳杉斷面搭配烤漆鐵件的實木創意鐘；以及臺灣柳杉實木斷面製成的造型邊桌，不容錯過。



Woodartland is from Taoyuan Pingzhen and upholds the philosophy of using wood art to create higher value in life. The company insists on the four design concepts "respect heaven and cherish materials, eco-friendly and toxic-free, natural interaction, and uniquely delicate." The company aims to create a fully wooden life, insisting on quality and the use of solid wood from the design and construction of wood structures, interior decorations using wood, furniture, to wooden products. The company mainly uses domestic timber, not only to reduce carbon footprint, but also to contribute to Taiwan's forestry industry.

Woodartland was established by young entrepreneurs to support the sustainable development of forestry, and uses locally produced eco-friendly toxic-free coatings to provide protection for its products. In terms of production technique, the company utilizes traditional mortise and tenon joints to create a stronger structure, adding a lasting appeal and sense of creative art to the appearance and characteristics of different types of wood. During the exhibition, visitors cannot miss the creative clock made by the company from the section of *Cryptomeria japonica* + iron parts with baking finish, as well as a desk made from the section of a *Cryptomeria japonica* log.

地址：桃園市平鎮區
中興路九龍段172巷6-19號
電話：0956-993 841



竹材商 Bamboo Suppliers





互若亞 FLORA

來自嘉義水上「互若亞」，為專司製造木地板與複合竹建材公司，以「FLORA」為品牌，自行研發出竹薄片的「平切」技術，並取得為期20年的「裝飾竹材薄片之製法」發明專利。建材安全方面符合國家檢驗標準，遇高溫時不會釋放有毒氣體；竹子開發的竹地板最下層為靜音防潮泡墊，亦符合JIS日本國家標準靜音與防潮。

「互若亞」精神理念—以竹代木，開創新綠能，讓國人體驗無甲醛、無VOC揮發物之健康環境竹之美！產品堅持採用環保素材，呼應「回歸自然，清新健康」現代訴求，材質及設計將兼重自然與環保，適時加入民族色彩、民間藝術等風格；並持續以最新技術及先進安全環保材料，創造出居家生活舒適性、安全性與功能性。



FLORA FLOORING CORP. is a company from Shuishang, Chiayi that specializes in the manufacturing of wooden flooring and composite bamboo building materials. The company sells its products under the brand "FLORA" and has developed a unique technique for thinly bamboo-slicing and obtained a 20-year patent for the technique in producing thin bamboo sheets for decorations. Its building materials are in compliance with the Chinese National Standards and do not release toxic gases under high temperatures. The bottom layer of bamboo flooring is a sound resistant and moisture-proof pad that complies with Japanese Industrial Standards in sound resistance and moisture-proofing .

The spirit of "FLORA" is to replace wood with bamboo and to develop new green material, so that consumers can experience the beauty of bamboo in a healthy environment without any formaldehyde and VOCs! It insists on using eco-friendly materials in products, which corresponds to the modern appeal for "returning to nature, refreshing, and healthy", and the materials and design equally emphasize on being natural and eco-friendly, adding ethnic patterns and folk-art styles when it's appropriate. The company continues to use the latest techniques and advanced safe and eco-friendly materials to provide comfort, safety, and functionality in home living.

地址：嘉義縣水上鄉南和村120號
電話：05-268 3106



欣林竹藝社

欣林竹藝社，創立於1976年，為專業竹材加工製造廠，並代客家工、製造及特殊產品訂做，初期之生產竹單板，爾後因竹製品被廣泛使用於日常生活及裝潢建材…等，於是在1991年擴大設備，生產竹蓆、積成材及竹裝潢建材，並開始承接外銷業務，目前以外銷歐美、日、韓…等國家。

主要產品：孟宗竹、桂竹產品、可加工製造用於竹蓆類、裝潢建材、竹麗板桌椅、竹編板、竹地板、碳化、竹片以及客製化竹製品。



Lin Bamboo Co. was established in 1976 and is a professional bamboo and wood processing plant. It provides customers with processing, manufacturing, and special customized products. The plant initially produced bamboo veneer and later expanded its equipment to produce bamboo mats, glued-laminated lumber, and bamboo materials for interior decoration in 1991 due to bamboo products being extensively used in daily life and decorations. The company also began to export products and currently exports to Europe, America, Japan, and South Korea.

Main products: Moso bamboo and makino bamboo products, bamboo that can be processed and made into bamboo mats, materials for interior decorations, bamboo tables and chairs, bamboo weaving, bamboo flooring, carbonization, bamboo chips, and customized bamboo products.

地址：南投縣竹山鎮集山路三段1689號
電話：049-264 3925





牛車輪竹品坊

成立於1997年的「牛車輪竹品坊」，是一間集藝術、生活、傳統、現代化竹藝工坊。位於有著得天獨厚地理環境，氣候溫潤，倚竹成林，適合竹類生長，迎風搖曳生姿，盡顯竹藝之美～南投縣竹的故鄉「竹山小鎮」。

工坊經理為美術工藝科系畢業，本身熱愛竹子，加上竹心虛骨、中空有節，象徵高風亮節、全德君子風範，自古廣受文人雅士喜愛，讓其致力以竹為素材，發展充滿竹藝特色之事業。目前牛車輪作品坊承接多起竹藝景觀，包含竹製風車、竹製小橋，連溪頭大學池吊橋與竹製六角涼亭皆出於手筆，同時設計開發出多款巧思藝術竹燈具、竹花藝資材等作品。

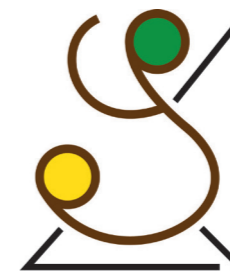


Niuchelun Bamboo Workshop was established in 1997 and is a modern bamboo workshop that features art, life, and tradition. The workshop is located in a geographic environment with a warm and humid climate that is suitable for tall bamboos, which have grown into a forest. The beauty of bamboos swaying in the wind can be seen in the hometown of bamboo in Nantou County's Zhushan Township.

The workshop's manager graduated from an art department and loves bamboo. Bamboos are hollow in the middle and symbolize noble character and unquestionable integrity, which is why they have been popular among scholars since ancient times. The manager thus used bamboos to develop a business featuring bamboo art. Niuchelun Bamboo Workshop has taken on numerous bamboo art landscapes, including bamboo windmill, bamboo bridge, and even the suspension bridge and bamboo hexagonal pavilion at Xitou University Pond. The workshop has also designed numerous exquisite artistic lamps and floral arranging supplies using bamboo.



地址：南投縣竹山鎮社寮里水尾巷8-6號
電話：049-262 2611



悦山工坊

悦山工坊創於2004年，輕型應用環保素材，研發生產桂竹、孟宗竹、煙燻防霉防腐天然竹材，並結合早期漆藝、木工、竹籬笆...等豐富的制工序經驗，承接國內外需要的景觀竹作工程及竹藝創新產品，開發製作實際從事竹材煙燻加工工作，提供國內外竹藝工作者優質的竹材料，促進竹材的銷售與竹工藝品的品質，帶動煙燻竹工藝風潮。

The company began developing makino bamboo, moso bamboo, and smoked anti-mold preservative-treated natural bamboo in 2004 as light eco-friendly materials. It utilizes its experience with lacquer, woodworking, and bamboo fence to take on domestic and overseas landscaping projects using bamboo, and developed innovative bamboo art products. It has developed and engages in bamboo smoking to provide domestic and foreign bamboo artists with excellent bamboo materials, which improves bamboo sales and the quality of bamboo artworks. This has created the trend of smoked bamboo works.



地址：南投縣竹山鎮集山路三段1396巷7號
電話：049-265 9230
email: bamboo.yuesan1961@gmail.com





璞園藝術坊

「璞園藝術坊」位於南投竹山，以精緻臺灣手工竹藝聞名，採環保孟宗竹之層積竹材，將典雅設計生活用品以高品質呈現，觸感光滑，風雅其中。竹之成長只須4年即成材利用，為林業中具高經濟與環保價值產物，兼具保護林地，減緩暖化優勢，璞園營業項目除高雅竹製藝品、竹製茶盤茶具、層積竹家具與各式竹製家用品外，近年亦投入竹炭開發，經過無氧高溫窯燒後，具有除濕、除臭、淨化空氣、淨化水質等之功能。

致力於竹藝品之研發生產外，「璞園藝術坊」也努力打造自然且具本土文化之空間。來到璞園，可欣賞到各種精緻竹藝品，庭園中，億年木化石、石盆、陶甕、果樹綠地與竹林形成獨特之景觀，讓您耳目一新，敬邀體驗璞園的竹藝與天地！



Puyuan Art Company is located in Zhushan, Nantou and is known for exquisite Taiwanese handcrafted bamboo art. It uses laminated bamboo made from eco-friendly moso bamboo to design elegant high quality goods with a smooth texture for daily use. It takes only 4 years for bamboo to grow and become usable, giving it a high economic and environmental protection value in the forestry industry, offering the advantages of protecting mountains and forests and mitigating global warming. Business items of Puyuan Art Company include elegant bamboo artworks, bamboo tea trays and tea sets, laminated bamboo furniture, and all kinds of bamboo housewares. The company has also developed bamboo charcoal in recent years, which can be used for removing moisture and odor, air purification, and water cleansing.

Beside developing bamboo artworks, Puyuan Art Company also dedicates its efforts to creating spaces that are natural and reflect local culture. You can enjoy the sight of the exquisite bamboo artworks at Puyuan Art Company. In the garden, there are wood fossils, stone pots, pottery jars, fruit trees, grass and bamboo forest that compose a unique landscape that gives you a breath of fresh air. You are welcomed to experience the bamboo art and space at Puyuan Art Company!

地址：南投縣竹山鎮延平新村1-20號
電話：049-265 3205



木竹創作廠商

Wood & Bamboo work Companies



1 多點 idodan

「1多點idodan」的設計理念「讓時間！多點溫度」強調手錶的功能並不只是看時間，更承載我們生命裡難忘的記憶與感情！

從臺灣工藝腕錶出發，結合在地工藝職人，打造出獨一無二的工藝商品。旗下珍木工藝腕錶系列，包含有臺灣杉、扁柏、龍柏、肖楠、牛樟等不同材質，可依喜好與品味挑選，錶面呈現原木木紋和浮雕字丁，機芯採日本原裝進口MIYOTA石英機芯，防水50米的不鏽鋼錶殼與藍寶石水晶鏡面，並搭配雙面義大利植鞣皮錶帶等。尤其今年更加入CNC雕刻技術，呈現更立體多元精琢木藝腕錶，能戴出獨特品味與溫潤質感，歡迎至展區一睹風采。



The design philosophy of idodan is to "give time! more warmth," and emphasizes that the function of watches is more than just to tell time, but also to carry unforgettable memories and sentiments in our lives.

The company brought together wrist watches with Taiwan's local craftsmen to create unique crafted goods. Its wooden craft wrist watch series includes Taiwan cryptomerioides, Taiwan cypress, Dragon Juniper, Taiwan Incense Cedar, and Stout Camphor. Customers can select products according to their preferences and taste. The surface shows the original wood grains and has embossed characters; the movement is MIYOTA quartz movement imported from Japan in original packaging; water resistant 50m stainless steel case with sapphire crystal glass, and double-sided Italian vegetable tanned leather straps. The company began using CNC engraving technology this year to create even more finely carved wooden wrist watches, which shows the wearer's unique taste and warm qualities. Visitors are welcome to see the elegant appearance of the wrist watches in the exhibition area.

地址：苗栗縣竹南鎮中山路168-1號
電話：037-552 929



木城工場 KIJO

「木城工場KIJO」來自臺中神岡區，以木工機械設備製造背景起家，率先將CNC雕刻與3D繪圖技術導入木作品牌做出了3D的臺灣地圖，販售原創商品與承接ODM、OEM、企業專案訂製。取名「木城」意為「木作城市」，同時諧音「木作程式」，代表採取電腦輔助及更具彈性與效率的創作。

「木城工場KIJO」結合現代日常生活所需品，讓木作產品融入日常生活中，並富有生命力。善於觀察日常生活細節，將木城工場KIJO精神貫徹，以「木」作「城」市的理念設計一系列作品；更秉持著「鐵匠心，木匠情」期許，持續Keep以創新Innovative、樂趣Joyful和原創Original，K-I-J-O為主軸，將產品帶往世界各地，讓更多人喜愛木城工場KIJO的創作設計。



KIJO Wood Studio is from Taichung Shengang District and started out as a manufacturer of woodworking machinery and equipment. It was the first to use CNC carving and 3D drawing technology to make a 3D map of Taiwan on a wooden work. The company sells original products and accepts ODM, OEM, and customized projects from companies. The company's Chinese name means "woodwork city", which is a homophone of "woodwork program" and represents computer aided creation that is more flexible and efficient.

KIJO Wood Studio makes woodworks into objects that need to be used in everyday life, so that they are full of life. The company has keenly observed details in daily life, and upheld its spirit in the design of a series of products with the philosophy of woodwork city. The company expects itself to have the heart of a blacksmith and emotions of a carpenter, to Keep being Innovative, Joyful, and Original – K-I-J-O, and bring its products to different parts of the world, so that even more people will fall in love with the creative designs of KIJO Wood Studio.

地址：臺中市神岡區光啟路98-5號
電話：04-2528 8215





木酢達人

木酢達人為臺灣林業生態系打造剩餘資材再利用之新創團隊。

木酢達人以充滿行動力與創造力的團隊，將過往臺灣不起眼的校樹及路樹修枝回收並妥適再應用，且成功鏈結起七個不同產業型態的三十家企業參與共構創新產品，創造精彩的REWOOD國產材、生物炭及木酢達人等一系列森林生活風格產品。

2021年開始木酢達人也積極朝向綠建材發展，期待提供建築師、設計師之可追溯及安全便利使用之原木材料及各種生物炭材，期待成為建築裝修工程的新概念與新倡議—用森林循環打造生活風格。



Dawoko is a Taiwan-based venture company, which recycles unnecessary trees and branches to maintain ecosystem.

Dawoko is unique in that it utilizes trees and branches in the schools or on the streets, which nobody pays attention to. Dawoko prunes, collects, and recycles them properly to make products. Dawoko succeeded in developing a series of widely-accepted products in collaboration with thirty companies from seven different industries. Dawoko's products provide consumers with a sense of being in the forest in daily life as seen in REWOOD domestic timber, biochar, and Dawoko-series products.

In 2021, Dawoko officially launched to develop green building materials. Dawoko aims to supply to architects raw wood and biochar materials which can be used safely and conveniently. Dawoko expects that its skills shed light on a new concept in the field of architecture - circulation of forests becomes a part of lifestyle.

地址：新竹縣湖口鄉中正路三段162巷16號
電話：0929-860 016



有道礼設計

「有道礼設計」秉持著處事有道·待人以禮，以創造生活美學為宗旨，透過社會菁英跨域共創，呈現空間藝術獨特美感，並以漆作、家具、空間等媒介展現品味，融合美感與機能，引領一場優雅的家居空間巡禮。

此次透過「國立臺北科技大學」建構的「木藝多樣小量類產業人才培育基地」，打造全臺唯一結合木藝1.0 - 4.0多樣少量的類產線，創造一個「會想」、「會做」、「會賣」合一的場域，並與「木藝培育暨設計研發中心」的產學合作案研發國產材家具設計，產出本次的系列性商品，為臺灣木藝發展注入新血。



UDAO.LI INTEGRATED DESIGN upholds the aim to create living aesthetics based on principles and manners. It creates a unique beauty of spatial art by working with elites across various fields, and shows its taste through lacquerware, furniture and space, integrating aesthetics and functionality on a tour of elegant home spaces.

The "talent cultivation base" for the woodworking industry focusing on large variety in small quantities established through National Taipei University of Technology combines woodworking 1.0 - 4.0 production lines for large variety in low quantities, creating the only space in Taiwan that can think, knows what to do, and sells products. The company also engaged in industry-academia collaboration with the Woodworking Training Design Research Center to design furniture using domestic timber and created the series of products displayed in this exhibition, injecting new blood into Taiwan's woodworking development.

地址：114台北市內湖區
新明路380巷4弄13號1樓



竹籟文創

竹籟文創

來自南投竹山的「竹籟文創」，為全臺首家由竹工藝工作室轉型為全方位專業竹文創公司，運用工業模組化概念，改良竹工藝傳統生產模式，開發大型竹結構工業模組化的現代化工藝技術，並取得多項專利。營業項目涵蓋竹裝置藝術、竹建築、竹木生活產品、DIY工作坊等，大型代表作包含臺中花博竹跡館、桃園農博五角亭、集集燈會地景裝置藝術、環保固碳竹公車亭等。

竹籟秉持「利人、利己、利他」環保與愛臺灣理念，堅持採用國產竹材，支持國產林業，專業團隊由竹工藝跨界至建築，至今已獲得許多國際建築獎項，並持續為臺灣竹產業發展找尋亮點。此次參展將展出提升國人環保新生活的竹纖維便當盒、竹纖維吸管、竹纖維餐具組等藝品。



BAM BOO LAI CO., LTD., which is from Zhushan, Nantou, is the first cultural creative company in Taiwan that specializes in all things related to bamboo, and was originally a bamboo craft studio. The company utilizes the industrial concept of modularization to improve the traditional production model of bamboo crafts. The modernized technology developed by the company for crafting large bamboo structures with industrial modules has obtained numerous patents. The company's business items include bamboo installation art, bamboo buildings, bamboo products for daily life, and DIY workshops. Large works made by the company include the Bamboo Pavilion of the Taichung World Flora Exposition, pentagonal pavilion of the Taoyuan Agriculture Expo, installation art during the Jiji Lantern Festival, and eco-friendly bus stops made from bamboo for carbon fixation.

BAM BOO LAI CO., LTD. upholds the philosophy "to benefit people, benefit itself, and benefit others" in the love of the environment and Taiwan. It insists on using domestic bamboo and supports domestic forestry. The company's professional team has expanded from bamboo craft to architecture, and has won numerous international building awards as it continues to search for highlights in the development of Taiwan's bamboo industry. During the exhibition, the company will display bamboo fiber lunch boxes, bamboo fiber straws, and bamboo fiber tableware set for citizens to lead a new eco-friendly lifestyle.

地址：南投縣竹山鎮公正巷50-5號
電話：049-265 4991



森學苑

森學苑的啟發點是一個共創、共享、共好的平臺，從木材到森林、林下經濟，以及林業政策推廣，網羅所有的資源以及管道，恰似一座森林包羅萬象，讓更多人了解並珍惜森林的多樣性。

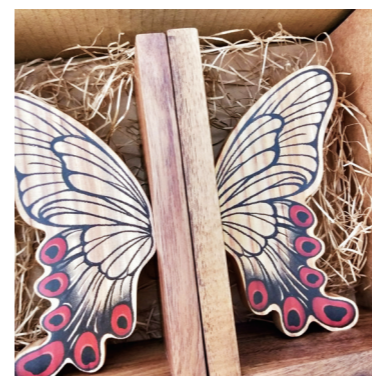
結合森林的美好以及對木材的專業技術，透過森學苑展現在人們面前，從對森林的認識、木材的專業、林下經濟的扶持，營造永續林業棲地，更花費心力將製材廠轉型為木業文化平臺。

歡迎您參訪森學苑，也期待您支持並選用國產材，與森學苑一起體驗森林帶給我們的「美好森活」。

The inspiration for Forestry School was to create a platform for co-creation, sharing, and mutual benefit. From wood to forest, under-forest economy, and forestry policy promotion, Forestry School has gathered all resources and channels to become all-inclusive like a forest, and allow even more people to understand and cherish the diversity of forests.

The beauty of forests and professional technologies related to timber are put in front of people through Forestry School, creating a base for sustainable forestry through understanding forests, expertise in timber, and support of under-forest economy. Forestry School has also dedicated its efforts to transforming a timber works into a forestry cultural platform.

We welcome you to visit us and hope that you will support and use domestic timber. Come and jointly experience the wonderful life brought to us by forests.



地址：宜蘭縣蘇澳鎮德興七路1號
電話：03-990 6585





國產材加工技術

Taiwan Wood & Bamboo, Processing Technology

德川音箱

「德川音箱」專門設計製造關於「木」的音響產品，從2015年設計給音響初心者的首代《音響入門誌》，到2020年好評續推的第二代，能深入淺出讓消費者認識音響，還可邊動手玩組裝，搭配「國產材」打造的Hi-Fi音響系統，包含臺灣桃花心木製作的揚聲器、臺灣紅檜包覆的擴大機與臺灣杉木殼的DAC耳機擴大機。此外，使用臺灣相思木所製造的五周年紀念版揚聲器—「相思」，也曾榮獲音響權威雜誌多項大獎，廣受國內外市場音響迷熱愛。

此次建材展上將展出由國產相思木打造的三吋全音域揚聲器—「小相思」，經典重現已絕版的相思；及由同為相思實木製作，散發高貴氣息的一體機—「長相思」，高中低頻表現完美，不論是放在床頭、廚房、小書房都很適合，使用上也非常便利，品味愛樂者不容錯過！



TOKU&GAWA AUDIO CO., LTD. specializes in the design and manufacturing of audio products featuring "wood". Starting from the first generation "Knowledge & Fun" was designed for audio beginners in 2015, the second generation was released in 2020 after receiving good reviews, and introduces consumers to audio in simple terms. Users can also have fun assembling a Hi-Fi stereo system made with "domestic timber" including loudspeakers made from Taiwan's mahogany, amplifier in covered with a layer of Taiwan Red Cypress, DAC headphone amplifier made with Taiwan cryptomerioides. In addition, the fifth anniversary commemorative speaker made by Taiwan Acacia Wood, "Acacia", has also won many awards in audio authoritative magazines. It is widely loved by audio fans in the domestic and foreign markets.

The 3" full-range speaker made by domestic Acacia wood, "Small Acacia", will be displayed during the building exhibition; on the other hands, Bluetooth audio which is also made by domestic Acacia wood, "Sauvignon Blanc", is recommended by its high and low frequency performance. Whether it is placed on the bedside, kitchen, or small study room, it is very suitable and convenient to use, making it a product that music tastes lovers cannot miss!



地址：臺北市中山北路一段83巷30號
電話：02-2521 3521



膠合集成材

膠合集成材 (Glued laminated timber, GLT) 為木材經過製備及選別後再藉由膠合所製成的工程材料，可加工成直線、彎曲或板材形式。各製程包含：製材加工、人工乾燥、集成元 (Lamina) 成形加工、集成元強度分等、長度接合、寬度及厚度佈膠及膠合作業及集成材成形加工等製程。加工期間除了可將板材缺點 (如：節、腐朽及空洞等缺陷) 移除而減少製品的變異性之外，並可提升其尺寸安定性。

直交集成材

直交集成材 (Cross-laminated timber, CLT) 為一種實心工程木板，其每一層的膠合板材均垂直於相鄰層，乃是一種板狀型態之工程木材集成品，集成元於側向拼接後，於厚度方向做木理直交式之集成堆疊而成。又由於木材為具有異方向性，各方向之物理及機械性質均具有明顯的差異，若利用直交式膠合技術進行集成品之製造，將可降低異方向所產生的差異特性，藉此提升集成品品質穩定與改善其性能。CLT為廣泛使用的木質工程材料之一，相較於其它複合板材產品，CLT不僅可做為結構牆體之構成元素，亦可直接作為承重牆 (Load bearing wall)、剪力牆 (Shear wall) 與樓板 (Floor) 等結構牆體。

竹重組板材

竹重組板材 (Scrimber bamboo board, SBB) 是將竹材經過機械加工製成重組板材後，具有優良的表面質地、硬度及縱向壓縮強度性能等優點，經過蒸汽熱處理後之含竹皮的竹材製成SBB時，將可獲得較一般針葉木材、竹集成材製成板材具更高的機械強度、膠合強度及尺寸安定性，故可廣泛地將SBB之竹複合材料應用於室內外地板、欄杆、家具及工程用材料。

Glued laminated timber, GLT

Glued laminated timber (GLT) is timber that has been prepared and selected to become construction materials after being laminated, and can be processed into straight lines, curved, or planks. Processes include: Material processing, manual drying, lamina forming and processing, lamina strength classification, bonding in the length direction, gluing and bonding in the width and thickness direction, and GLT forming and processing. The processing not only removes the weakness of plates (such as nodes, decay, and holes) and reduces variance between products, but also improves dimensional stability.

Cross-laminated timber, CLT

Cross-laminated timber (CLT) is a type of solid engineered wood panel, in which every layer of laminated timber is oriented perpendicular to the adjacent layer. It is a combination of engineered wood in the form of a plate, in which wood boards are glued on the wide face, and the orientation of each board is perpendicular to each other. There are significantly different physical and mechanical properties of wood boards when force is applied in different directions, and the production of CLT reduces the difference between properties in different directions, thereby improving the stability of its quality as well as its performance. CLT is a type of engineered wood that is extensively used. Compared with other composite board products, CLT can be used as a component in structural walls, or even directly used as a load bearing wall, shear wall, or floor.

Scrimber bamboo board, SBB

SBB is made by putting bamboo through mechanical processing to give it an excellent surface texture, hardness, and compression strength parallel to grain. When bamboo with the skin on goes through steam treatment to become SBB, it gains higher mechanical strength, bond strength, and dimensional stability compared to typical softwood. Hence, SBB can be extensively applied in indoor and outdoor flooring, railing, furniture, and construction materials.



國產材 符合永續發展目標SDGs精神

人類誓願到了2030年要更好。

眼見人類文明呈現前所未有的高度發展，卻因高度往城市化發展所帶來的許多副作用，不僅貧窮與飢餓等發展傾斜問題未改善，更導致地球自然資源正處於空前的消耗，加上氣候變遷的現象，森林與海洋的生物多樣性早已受到巨大威脅。

2015年，由193個國家共同簽署的聯合國永續發展目標（Sustainable Development Goals，簡稱SDGs），提出17項永續發展目標，求取於兼顧「經濟成長」、「社會進步」與「環境保護」等三大面向之下，開展出積極的行動方案；其中，目標12「負責任的消費與生產循環」、目標13「應對氣候轉變的對策與行動」、目標15「陸域生態」都與國產材息息相關。

建築與工程營造採用國產材完全符合目標12、13、15。林務局於2017年宣告為「國產材元年」之際，林華慶局長即強調：「木材係可再生的資源，就資源角度而言，若生活裡完全不使用木材，即意味著必須用水泥、塑膠等消耗性資源，從挖掘開採到生產過程中，消耗甚多能量，且無法分解，反倒形成諸多廢棄物，相較之下，能夠再生的木材是最好選擇。」同時，必須以世界公民視野來運用木材，在我國每年進口木材量逾90%之下，不該為了保護自己的人工林，而砍伐別人的天然原始林。

作為地球村一員的我們，也必須以分級分區制度，透過適當砍伐與循環生產國產材，使減少運送的碳足跡，於改善氣候變遷貢獻一分力量，同時復甦沉寂多時的林業，更能透過循環的生產與消費，保護全球的自然原始林，使生活其間的陸域生物安居繁衍，履踐生物多樣性的健康生態系。

Taiwan Wood & Bamboo, In Accordance With SDGs Principles

We human beings vow to make earth a better place by 2030.

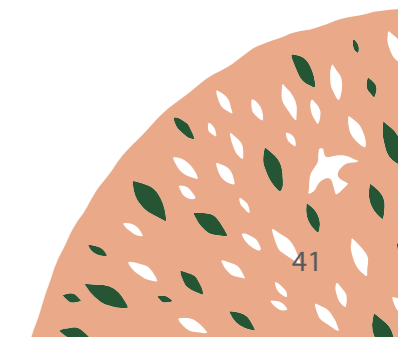
At the present time when it seemed that human beings reached another peak in civilization, yet by products brought by highly developed metropolis such as issues of poverty and hunger are aggravated and most of the natural sources are being depleted at an unprecedented rate. The resulted climate change had brought about an astronomical threat to biodiversity in the forests and the oceans.

193 countries signed the Sustainable Development Goals (SDGs in short) in 2015 and declared 17 sustainable goals which proposed progressive policies to maintain economic growth, social development, and environment aspects. Among the 17 goals mentioned above, the 12th, "to ensure sustainable consumption and production patterns", the 13th, "to take action towards climate change", and the 15th "to take care of all living beings on land", all concern local timber production.

Employing locally-grown timbers to construct architecture and infrastructures complies with the goals 12, 13, and 15 mentioned above. While the Forestry Bureau declared 2017 as "the first year of local timber," Dr. Hwa-ching Lin, the Director General of the

Forestry Bureau, emphasized that "From the perspective of energy, if we do not use any renewable resources such as timbers in our daily life, then we would have to use none-biodegradable and/or over-consumed resources that required a great deal of energy during the process of production, such as concrete and plastic. In comparison, the latter materials would cause much more wastes than timber. All perspectives considered, renewable timber is the best choice." At the same time, we should consume timber from the perspective of world citizens. As of the present situation, over 90% of timber consumption in Taiwan is imported from other countries. In fact, we should not consume too many timbers from other countries so as to preserve artificial forests in our own country.

As a member of the world citizen, we should build up a grade and grid system to cut down carbon footprints by taking turns thinning forests in different sections and re-planting new trees. By doing so, we can contribute our share in overturning climate change and revitalize the local timber industry which had been dormant for years in Taiwan. In addition, the circle of production and consumption will protect virgin forests all over the world, ensure the safe abodes of the animals living in those forests, and promote healthy ecology of high biodiversity.



人工林永續經營與循環經濟

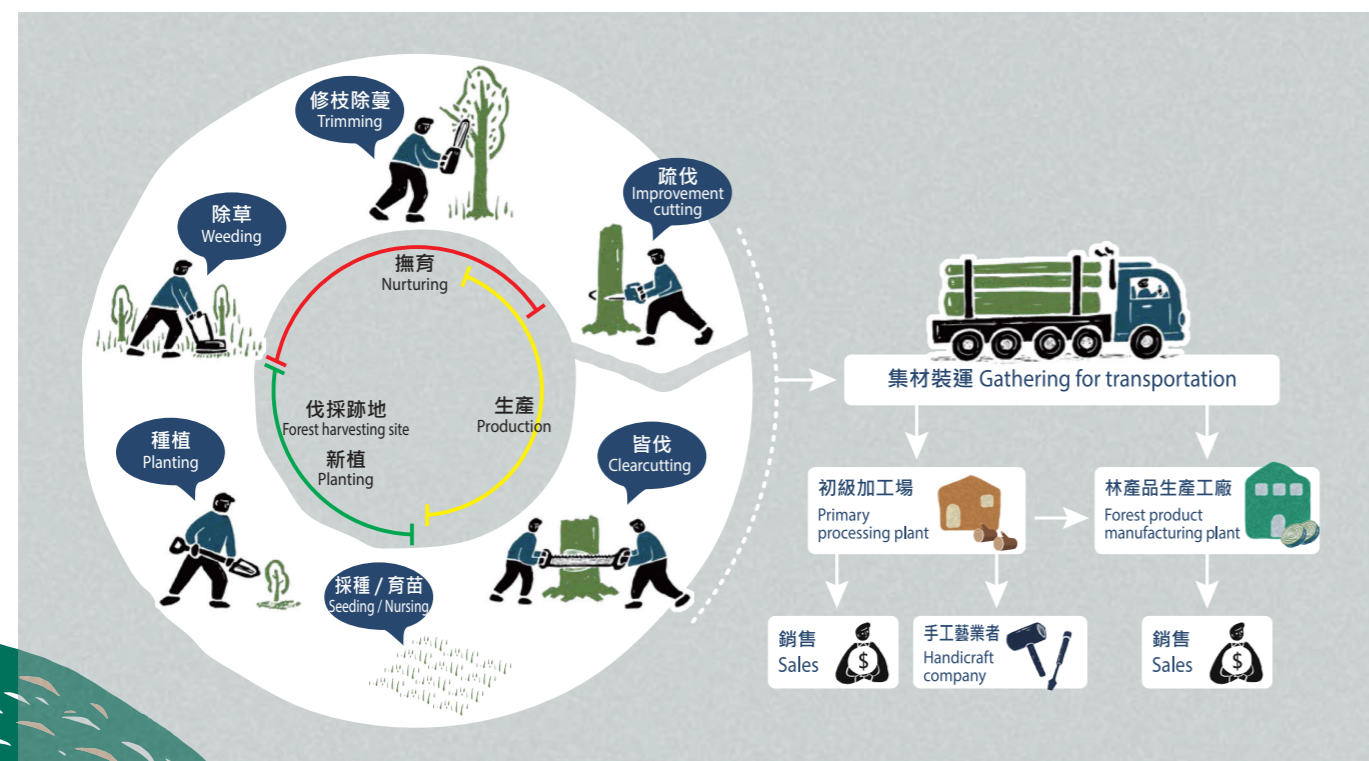
Sustainable Management of Plantation Forests and The Circular Economy

人工林經營與木竹材生產是一種永續性且友善環境的農業生產，它具有生長期長、可收穫期長及產品多元化的特性。木竹在生長過程會吸收二氧化碳，製成各類林產品時仍保存大量二氧化碳，最終可自然分解，回歸大自然，是地球的碳匯銀行。

合理、永續經營的人工林，在林木伐採跡地上，種植適地適木的原生苗木，經由撫育作為，可以維持林地健康，提高生物多樣性，發揮國土保安及生態保育功能；修枝產生的枝葉，可作文創產品或精油、純露，疏伐與皆伐的木竹材，可供產製各類林產品。從種植到生產的過程，沒有施用農藥與肥料，對環境與野生動物是友善，是最安全、也符合循環經濟的農業生產。

The management of plantation forests and its production of wood and bamboo materials are ways of sustainable and environmentally friendly agriculture. It features a long growth period, long harvest period, and product diversity. Wood and bamboo absorb carbon dioxide as they grow and they also retain a large amount of carbon dioxide when they are made into different forest products. They can eventually decompose naturally and be returned to nature, making them the carbon bank of the earth.

Reasonable and sustainable management of plantation forests, planting suitable native seedlings on forest harvesting sites, and additional nurturing measures can maintain the health of forest land, increase biodiversity, and ensure homeland security and ecological conservation. Branches and leaves cut during trimming can be used to produce creative products, essential oil, and hydrolates. Wood and bamboo obtained from improvement cutting and clearcutting can be used to produce a variety of forest products. No pesticides or fertilizers are used in the process from planting to production. It is friendly to the environment and wildlife and the safest form of agricultural production that also supports the circular economy.



採種、育苗

採種、育苗是森林經營的基礎，無論保育林或經濟林的經營，二者的共通性為「適地適木種植原生苗木」為原則。人工林則經永續經營所生產的優質木竹材，經由各類生產途徑，可以達到零廢棄、低碳排的循環經濟效益。

林業永續多元輔導方案

為營造健康優質的森林，以永續經營的理念，發揮國土保安、生態環境保育及生物多樣性等功能，輔導森林經營者，在育苗、新植、撫育階段，提供技術或挹注經費，依土地使用容許項目，進行林、農、牧與遊憩等多元經營，以達成兼顧森林環境保育、木質及非木質之竹木類林業生產、林業經濟發展等多方效益。

國產材標章

為確保廠商所生產的各類林產品，所使用之木竹材原料為國產且具法來源；也為保障消費者所購買的各類林產品是符合環保的永續消費，請生產、選購具以下標章的林產品：

Seeding and nursing

Seeding and nursing are the foundations for forest management. The common principle for the management of both conservation forests or economic forests is "suitable trees for suitable land and planting of native seedlings". The high-quality wood and bamboo materials produced through sustainable management of plantation forests and different production processes can attain zero-waste and low-carbon benefits in the circular economy.

Counseling for sustainability and diversity of forestry

To ensure the health and quality of forests, we have adopted the concept of sustainable management to make use of their functions for homeland security, ecological environment conservation, and biodiversity. We provide guidance to forest operators in the form of technology or funding during the seedling, planting, and nurturing phases. We approve projects based on land use to ensure diversity in forest operations, agriculture, animal husbandry, and recreation to achieve multiple benefits such as forest environment conservation, wood and non-wood bamboo forestry production, and economic development in the forestry industry.

Domestic production label

To ensure that the wood and bamboo materials used by companies for producing forest products are sourced from legal sources in Taiwan and ensure that forest products purchased by consumers are sustainable consumption friendly to the environment, please produce and buy forest products with the following labels:



林產品生產追溯條碼 (QR code)

溯源管理 國產材商品皆可自主申請、管理。
已有104家廠商通過QR code溯源登錄，近1,000件產品（約4萬立方公尺材積的國產材）取得追溯條碼。

Taiwan Forest Products Production Traceability Code (QR code)

To ensure traceability management, manufacturers of products made with domestic materials can apply for and manage labels.
104 companies have passed the QR code traceability registration and nearly 1,000 products (approximately 40,000 cubic meters of domestic materials in volume) have obtained the traceability code.



優良農產品 (CAS) 標章—林產品

CAS標章是國產農產品及其加工品最高品質代表標章。定期抽檢市售商品，商標被冒用風險低，民眾可安心選用。

Certified Agricultural Standards (CAS) label - forest products

The CAS label represents the highest quality level for domestic agricultural products and their processed products.
Regular sample inspections of products sold on the market ensures low risks of counterfeit trademarks. Buyers can place their trust in the system.



產銷履歷TAP標章—林產物木竹材

溯源+流程與品質管理。
生產流程控管、產品檢驗，控管木材交易流程，避免混充，降低生產過程產出問題產品的風險。

Traceable Agricultural Product (TAP) label - forest products made with wood or bamboo

Traceability + process and quality management.
Production process control and product inspections are implemented to control the wood trading process, avoid mixing or fake products, and reduce the risks of producing defective products in the production process.



台灣木材標章

國產木竹材的身份證，凡取得經TAP、CAS、QR code之廠商，其林產加工品均可使用該標章為國產木竹材產品的代名詞，消費者只要認明「台灣木材」標章，即可安心選購。

Taiwan Wood label

This system provides identity certification for domestic wood and bamboo materials. Companies that have obtained the TAP, CAS, or the QR code can use such labels for their forest products. The labels mean that the wood and bamboo products are produced in Taiwan and consumers simply need to find the "Taiwan Wood" label to identify the right products.

初級加工場

林務局推動林產類「農產品初級加工場」登記，係輔導從事林業生產的農民或農民團體，以合法「林業機具室」為基地，依「農產品生產及驗證管理法」取得初級加工場登記證，利用溯源或驗證之原料，讓林主在一定規模下生產的特定林產類初級加工品項，自產自銷，能在商店、賣場等通路上行銷，或直接販售給手工藝業者，增加林主收入，也能穩定國產木竹材料源。

國產材展銷平臺

林務局為推廣國產材，每年辦理森林市集及國際建材展—國產材臺灣館等實體展銷活動，主動邀請並協助取得各類國產材標章的廠商參加；在社群平臺行銷方面，台灣木材網可提供「供需媒合」、廠商資訊、木材標售、建築工程案例等；「林務局-森活情報站」亦會推播優質木竹材產品與優良廠商。



Primary processing plant

The Forestry Bureau promotes the “primary processing plant” registration system to help farmers or farmers' associations that engage in forestry production. They can use legal “forestry machinery rooms” as the site for obtaining a primary processing plant registration in accordance with the “Agricultural Production and Certification Act”. Forest owners can use traceable or certified materials to produce specific forest products in primary processing and sell them. They can market them in stores and outlets or sell them directly to handicraft companies to increase the income of the forest owners and stabilize the supply of domestic wood and bamboo materials.

Domestic materials exhibition and sales platform

To promote domestic forest materials, the Forestry Bureau organizes forest market events, the Domestic Materials Taiwan Pavilion in the Taipei Building Show, and other face-to-face marketing events each year, and actively invites companies with domestic production labels to attend the events. In terms of marketing on social media, Taiwan Wood offers “supply and demand matchmaking”, company information, auctions of wood materials, and construction project case studies. Forestry Bureau’s Facebook page (@twforest) also promotes high-quality wood and bamboo products as well as reputable companies.

Multiple horizontal lines for text input.

